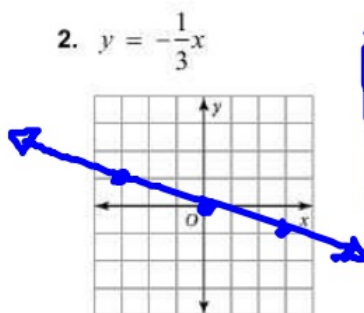
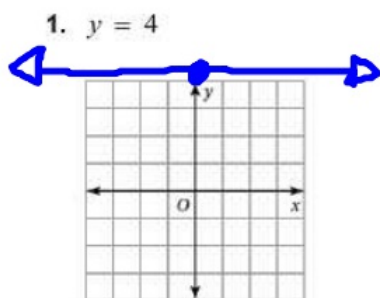


Name _____

Date _____

4.1 - 4-2 Quiz 4-1 - 4-2

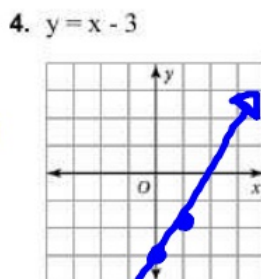
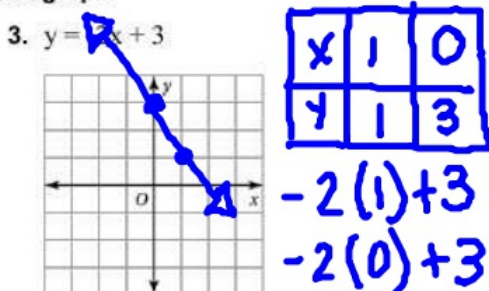
Graph the linear equation. Use a graphing calculator to check your graph, if possible.



x	3	0	-3
y	-1	0	1

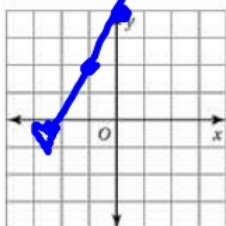
$-\frac{1}{3} \cdot 3$ $-\frac{1}{3} \cdot -3$

Solve for y . Then graph the equation. Use a graphing calculator to check your graph.



5. The equation $y = 2x + 4$ represents the cost y (in dollars) of renting a movie after x days of late charges.

a. Graph the equation.



x	-1	0
y	2	4

$2(-1) + 4$
 $-2 + 4$
 $2(0) + 4$

- b. Use the graph to determine how much it costs after 3 days of late charges.

$x = \text{days}$

$y = 2(3) + 4$

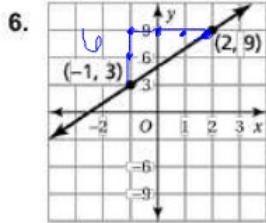
$6 + 4 = 10$

\$10 per 3 days

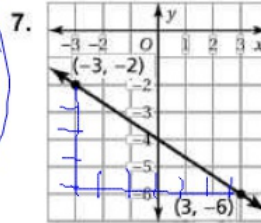
Find the slope of the line.

graph goes by 3 for y

& 1 for x



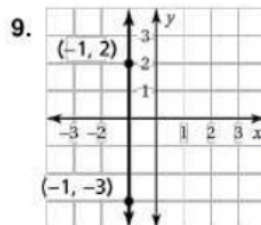
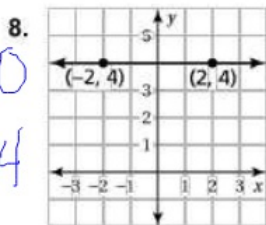
$$\frac{6}{3} = \frac{2}{1}$$



$$-\frac{4}{6} = -\frac{2}{3}$$

Change y = 0
change x = 4

$$\frac{0}{4} = 0 \text{ Slope}$$

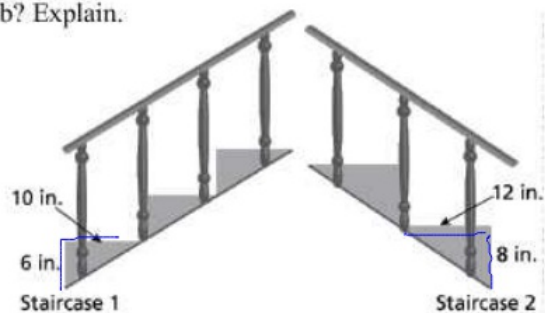


Change y = 5
change x = 0

Slope undefined

10. Which set of stairs is more difficult to climb? Explain.

Slope 2 is more difficult



$$\frac{6}{10}$$

$$\frac{8}{12}$$

