

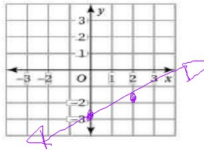
Name _____

4-1 - 4-3 Quiz

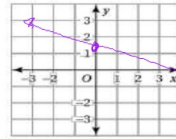
Graph the linear equation.

1. $y = \frac{1}{2}x - 3$

x	0	2
y	-3	-2

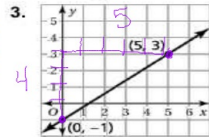


2. $y = -\frac{x}{4} + 1$

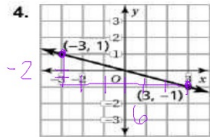


x	0
y	1

Find the slope of the line.



Slope = $\frac{\text{Rise}}{\text{Run}} = \frac{4}{5}$



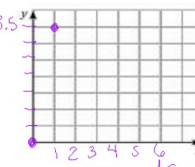
$-\frac{2}{6}$

$-\frac{5}{4}$

5. What is the slope of a line that is perpendicular to the line in Exercise 3.

6. The cost y (in dollars) for x pounds of deli meat is represented by the equation $y = 3.5x$. Graph the equation and interpret the slope.

Slope = 3.5 $\$$ 3.5 per lb
1 \leftarrow lbs



= cups
= eggs

Slope = $\frac{\text{cups}}{\text{eggs}}$

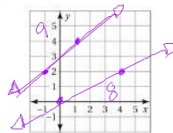
7. The amount y (in cups) of flour is proportional to the number x of eggs in a recipe. The recipe calls for 6 cups of flour for every 4 eggs.

- Write an equation that represents the situation. $y = mx$
- Interpret the slope.
- How many eggs are included when the recipe uses 12 cups of flour

Complete the table. Plot the two solution points and draw a line exactly through the two points. Find a different solution point on the line. (Use the same axes for both graphs.)

8.

x	0	4
$y = \frac{1}{2}x$	0	2



9.

x	1	7
$y = x + 3$	4	2

Answers

8. See left.

9. See left.

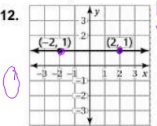
Solve for y. $x + 4y = -12$

10. $x + 4y = -12$ $4y = -x - 12$ $y = -\frac{1}{4}x - 3$

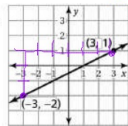
$2x - 3y = 3$

11. $2x - 3y = 3$ $-3y = -2x + 3$ $y = \frac{2}{3}x - 1$

Find the slope of the line.



$\frac{0}{4} = 0$



$\frac{3}{6} = \frac{1}{2}$

14. Which is steeper, a slide that rises 3 feet for every 2 feet of run, or a sliding pole that rises 5 feet for every 3 feet of run? Explain.

$\frac{3}{2}$

$\frac{5}{3}$

